

# ***GRANITE PEAK BUSINESS CENTER*** ***1300 Venture Way Casper, Wyoming***

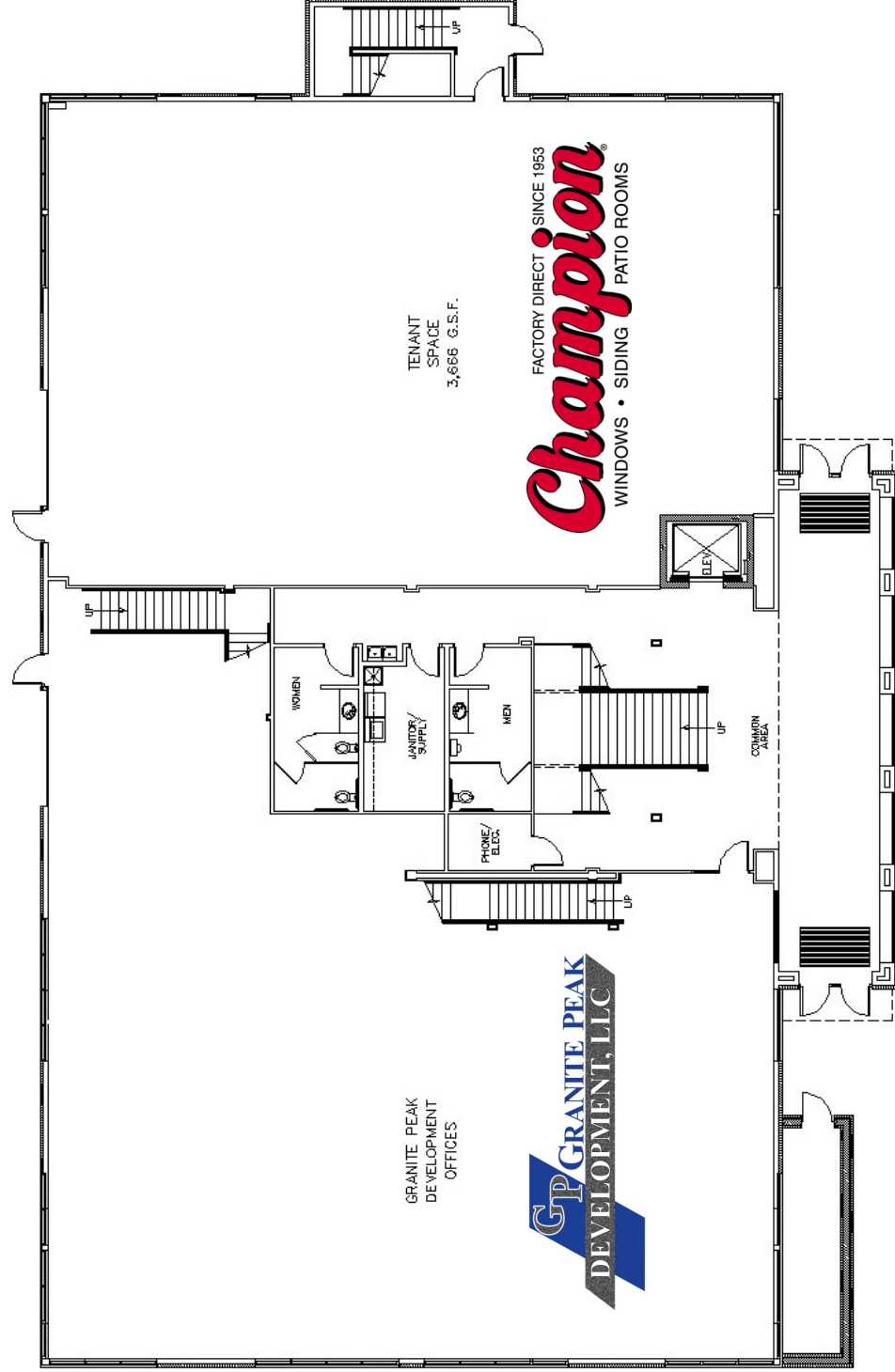


**Contact: Bob West**  
**1300 Venture Way**  
**Casper, WY 82609**  
**bob@granitepeakdev.com**

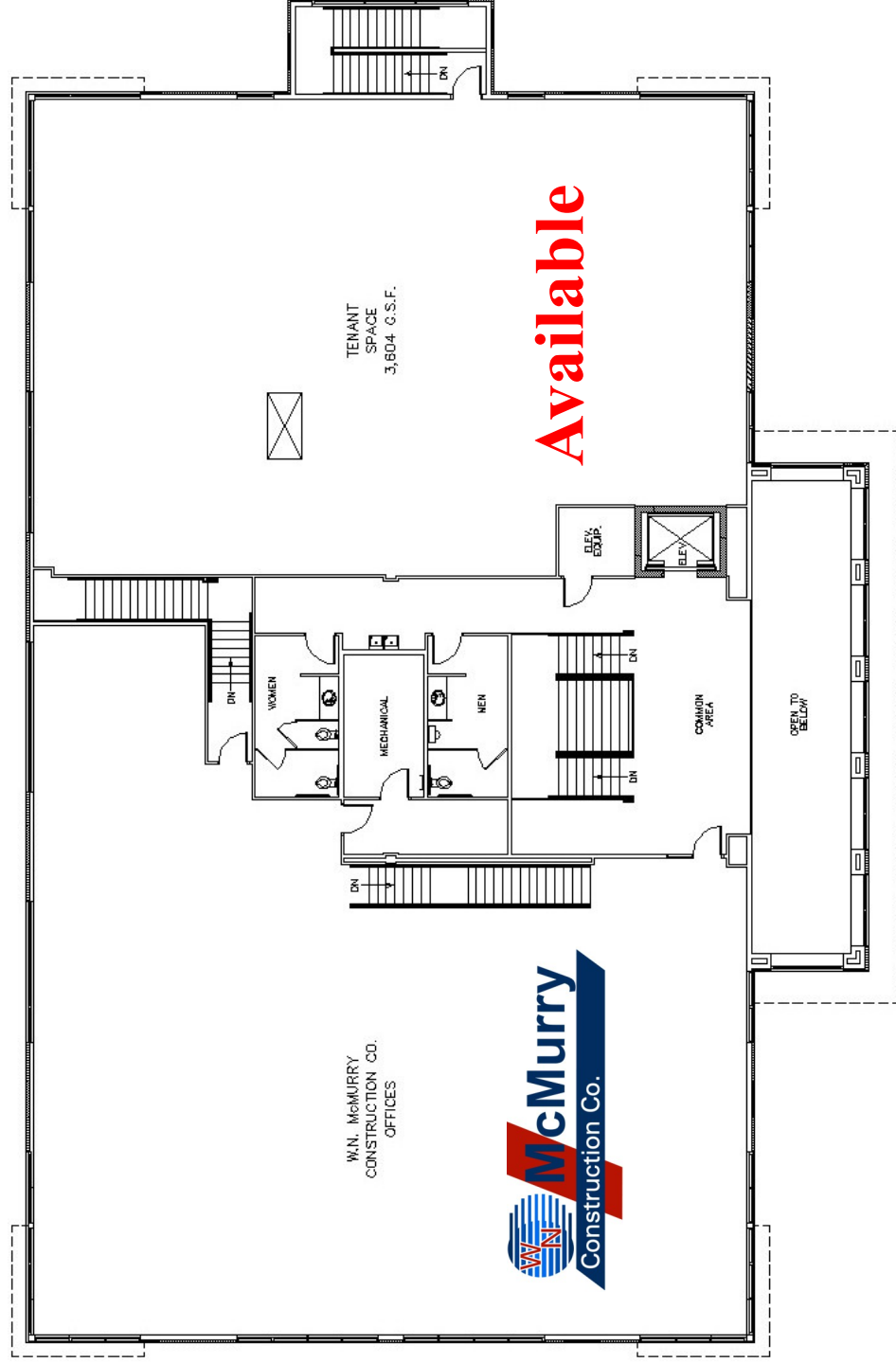
**Office: 307-472-7275**  
**Cell: 307-262-2804**  
**Fax: 307-235-1485**  
**www.granitepeakdev.com**

- **Two story class A office building**
- **Located in the McMurry Business Park in east Casper**
- **Centrally located to medical and other office campuses**
- **Now available for occupancy**
- **Approx. 3,600 SF of lease space available**
- **Custom floor plans designed to meet tenants' needs**
- **Excellent access and visibility to and from East 2nd Street and U.S. Interstate Highway 25**
- **Convenient parking**
- **Professional office space is ideally suited for title, accounting, insurance, law, engineering, architectural, surveying, energy and medical companies**





FIRST LEVEL FLOOR PLAN  
10,145 SQ. FT.



SECOND LEVEL FLOOR PLAN  
10,365 SQ. FT.